

HORSE BARN FLOORING



Photo credit: DC Structures



CLASSIC
EQUINE EQUIPMENT

PROTECT WHAT MATTERS MOST



Photo Credit: Buck It Equine, LLC



RUBBER AISLE PAVERS

True-Step® pavers provide comfort and safety

True-Step® Interlocking Rubber Pavers create a non-slip barn surface in wet or dry conditions. Our rubber pavers can be used for aisle flooring, walkways, grooming stall flooring...virtually anywhere you need a safe surface for you and your horse. In addition to safety, True-Step® Interlocking Rubber Pavers add a decorative flair that is easily maintained.



True-Step® pavers come in three colors and two different thicknesses

Nonslip flooring—lasting beauty

True-Step® pavers are available in three popular colors: black, gray, and terracotta red. You can mix and match them in and around your barn to add breathtaking beauty. The interlocking “dog-bone” shape provides an attractive pattern while holding them securely in place. We offer True-Step® pavers in two different thicknesses. For existing concrete barn aisles, ¾” thick pavers can be applied with adhesive, transforming your barn aisle into an attractive and safe footing for you and horses. To eliminate the additional cost of a full concrete pour, 1-1/2” thick pavers can be installed directly on compacted base material. When installed properly, True-Step® pavers have an extremely long-life expectancy.

Keep your barn beautiful

Prestigious venues across North America choose our pavers because they will not fade in UV light, and they withstand harsh freezing and thawing conditions. Other brands may crumble or crack in extreme weather conditions. Our 100% recycled rubber pieces are shredded, interwoven, and chemically bonded together, resulting in a sturdy bond that ensures long-lasting durability—enough to drive cars and tractors on. Clean-up is easy with True-Step® pavers. You can use a broom, leaf blower, vacuum, or even a pressure washer—a testament to their enduring strength.



STALL MATTRESSES

Designed for comfort and convenience

StableComfort is a wall-to-wall waterproof stall mattress system. This resilient yet forgiving surface closely mimics the feel of natural pasture. Horses stabled on this mattress system are more likely to lie down. Hock sores are greatly reduced. Its one-piece top cover makes cleaning the stall a breeze.

Not only is this mattress system ergonomic, efficient, and economical, it's also environmentally friendly as it significantly reduces the amount of shavings waste. Multi-celled mattresses filled with uniform rubber crumbs for comfort and shock absorbency create the comfortable underlayment. The one-piece top cover is an industrial-strength geotextile, permeated with a vulcanized rubber compound, giving it indestructible durability.

Easy to install

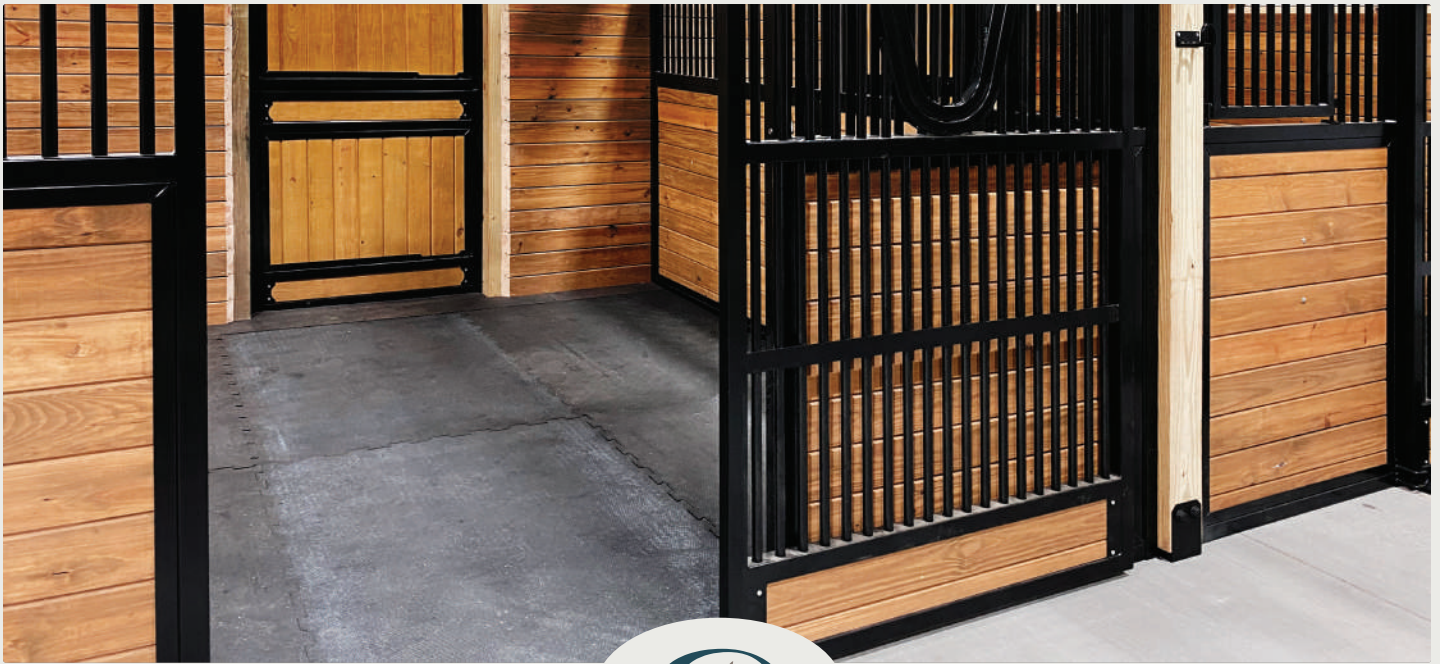
Installation begins by placing 4' by 6' crumb-filled mattresses in the stall. Extra crumb rubber is placed on top of the mattresses to fill any gaps. The one-piece top cover is fastened to the stall walls using plastic fastening strips and screws. This ensures that no bedding or waste gets underneath the stall mattress system.

With the comfort provided by the StableComfort mattress system, shavings need only be used for the absorption of urine. Muck-out time is greatly reduced, and when you factor savings in bedding costs, this product will pay for itself.



FEATURES

- ✓ **Waterproof design**
Wall-to-wall stall coverage and waterproof textiles contain liquids for easy clean up
- ✓ **Industrial-strength durability**
Top cover is a geotextile permeated with vulcanized rubber, making it nearly indestructible
- ✓ **Increased stall comfort**
Mimics the feel of a pasture, so horses lie down more
- ✓ **Efficient and economical**
Easy to clean, reducing muck-out time and money spent on shavings
- ✓ **Reduces horse injuries**
Reduces the development of hock sores and is shock absorbent for comfort



STALL AND WASH BAY MATS

Designed for safety and ease

Are you tired of hauling stall mats out to clean up the mess underneath? Loktuff™ interlocking mats provide a perfect solution. Backed by warranty, they are designed to minimize any concerns with buckling or curling.

Loktuff™ stall mats securely lock together to prevent bedding from lodging underneath. Available in ¾" thickness for stalls, and ½" thickness with a color speck for barn aisles.

Designed for enhanced safety in your wash stall, Loktuff™ button-style mats provide sure footing for horses and people. They are non-absorbent, insulate against cold and damp conditions, and are flat on the bottom to minimize bacteria growth. Interlocking design minimizes curling or buckling, preventing the trip hazard typically created by non-interlocking mats. Made from vulcanized rubber, the mats will not change shape under pressure. Water-jet-cut edges ensure a tight fit every time. The most popular size is 4' by 6', but custom configurations are available.

FEATURES

- ✓ **Heavy-duty interlocking lugs**
Interlocking design ensures a tight fit and keeps flooring flat on the ground and in place
- ✓ **Non-absorbent, vulcanized rubber**
Installed on the proper subsurface, mats won't change shape under pressure and are slip-resistant
- ✓ **12-year warranty**
No buckeling or curling, guaranteed
- ✓ **Custom sizing available**
Mats can be ordered custom to fit where you need
- ✓ **Easy to clean**
Waterjet-cut edges provide a tight fit, so bedding doesn't lodge underneath
- ✓ **Safe and comfy for horses**
Reduces horse injuries and bedding costs, while increasing traction and comfort



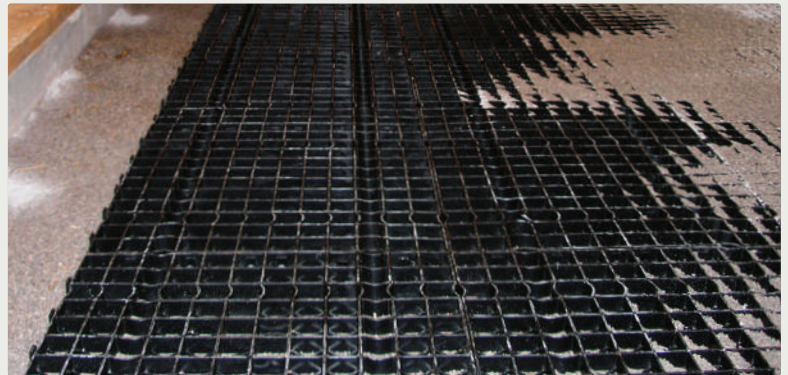


STABLE-ITY GRIDS

Permanent mud management solution

Providing excellent drainage, Stable-ity Grid is an interlocking system that prevents mud buildup throughout the farm. It stabilizes the ground inside or outside the barn, making it ideal for high-traffic areas such as paddocks, gate openings, sacrifice turnouts, run-in sheds and water troughs. When used in stalls, our Stable-ity Grids maintain a permanently level surface that prevents horses from digging, simplifies cleaning, and helps control odor.

To install, place the 24" square interlocking grids over a level rock base and backfill with fines (angular or course sand, bluestone, etc.) or road cloth for optimal results.



FEATURES

- ✓ **Superior sturdiness and stability**
Eliminate mud and provide solid walkways where needed, inside or outside of your barn
- ✓ **Interlocking grids**
24" grids can be connected to provide level, mud-free surfaces that don't move
- ✓ **Easy to install**
Install over a leveled rock base and backfill with sand or road fabric for optimal results
- ✓ **Maintains stall flooring**
Prevents horses from digging in their stalls and keeps floors level for easier cleaning
- ✓ **Prevents muddy areas**
Water drains easily through the grid to prevent mud accumulating in high-traffic areas

UNSURPASSED SAFETY FOR HORSES AND PEOPLE



EUROPEAN SERIES

Hinged-door stalls provide unsurpassed safety with distinct European styling and details. The open designs are optimized for both visibility and ventilation. Ideal for barns with wider aisles, hinged doors open wide for maximum accessibility.



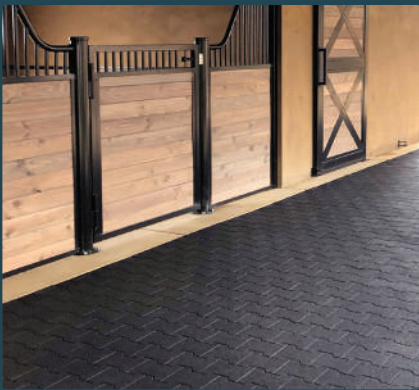
LEGEND SERIES

Sliding-door stalls do not swing outward into the aisle and are ideal for busy facilities where multiple horses are frequently coming and going. The space-saving design also makes them a great choice if you have a narrow aisle in your barn.



COMPONENT KITS

Classic offers all the safety, quality, and craftsmanship found in our full-frame stall-front series in do-it-yourself stall component solutions. Choose from sliding-door Integrity stall components or hinged-door stall components.



HORSE STALL FLOORING

Durable solutions for stalls, aisles, walkways, grooming stall flooring, or anywhere you need a safe surface for you and your horse. In addition to safety, rubber pavers add a decorative flair to your dream barn.



BARN DOORS AND WINDOWS

Our steel-framed doors and windows are built to the same high standards as our award-winning stalls and doors. The hinges and sliding-door track hardware we use ensure safe and consistent operation.



HORSE BARN ACCESSORIES

Complete your dream barn with stabling accessories, including wash bay components, barn fans, lighting, waterer and feeding options, tack room organizers and storage solutions, and pasture gates.