

INTEGRITY SERIES AND KIMBERWICK SERIES
STALL COMPONENT KITS



CLASSIC
EQUINE EQUIPMENT

PROTECT WHAT MATTERS MOST



WHY BARN BUILDERS PREFER CLASSIC

Our component solutions for stall fronts and partitions combine safety with ease of installation for post-frame and post-and-beam barns. All of our grill sections are fully welded to eliminate the hassles of pre-assembly before installation. Matching the quality and durability of our full-frame stall systems, our components come with a 5-year limited structural warranty.

To accommodate the barn owners' needs, components are available in two styles, Integrity sliding-door kits and Kimberwick hinged-door kits.

PERFECT FOR BARN REMODELING OR NEW CONSTRUCTION

- ✓ Super-durable powder coating over galvanized steel frame provides optimal corrosion resistance
- ✓ U.S. manufactured with 100% American-made galvanized steel
- ✓ Superior latching and guide systems ensure safety
- ✓ Fully welded heavy-duty outer frames for strength
- ✓ Easy to install and virtually maintenance free
- ✓ Value engineered to fit all barn budgets without compromising safety
- ✓ Available in standard sizes and lengths
- ✓ Trim to fit for easy adaptation on the jobsite if needed

CONNECT WITH A DESIGN CONSULTANT

Whether you're remodeling an existing barn or building new, our design team can help bring your dream barn to life.

CLASSIC-EQUINE.COM | 800-444-7430





INTEGRITY SERIES COMPONENT KITS

Sliding-door horse stall components for builders

Integrity Series components offer many of the same safety features and benefits as our Legend Series full-frame sliding-door stall fronts but are supplied to you as a component kit. The durable components are designed to fit within your existing columns and are easily installed by you or your builder.



Integrity 1000 stall front with grill feed door, plus full grill stall door with shaving guard

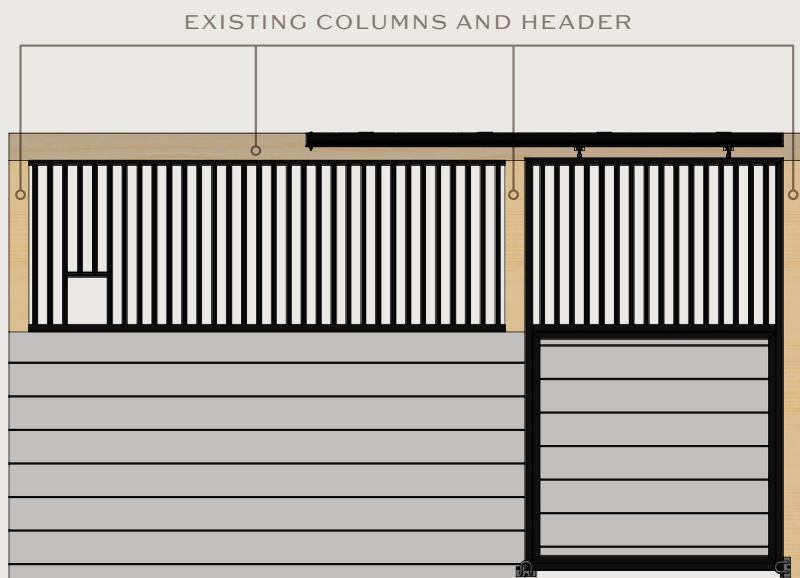
FEATURES

- ✓ **Secure flip-lock latch**
The safest in the industry, horses will not get snagged and they cannot open
- ✓ **Optimized for safety**
Narrow spacing between 1" steel bars prevent hooves from getting caught
- ✓ **No rough or sharp edges**
Smooth surfaces at all touchpoints protect your equine family
- ✓ **Superior corrosion resistance**
US-made heavy-duty 14-gauge galvanized steel
- ✓ **5-year structural warranty**
Classic stalls are engineered and fully-welded to stand the test of time
- ✓ **Smooth, quiet sliding-door**
Self-cleaning, maintenance-free operation with lifetime warranty
- ✓ **Exquisitely handcrafted**
30+ years perfecting our engineering and fabrication processes
- ✓ **Custom design options**
Personalize your dream barn with stalls that serve your equestrian lifestyle

STYLES

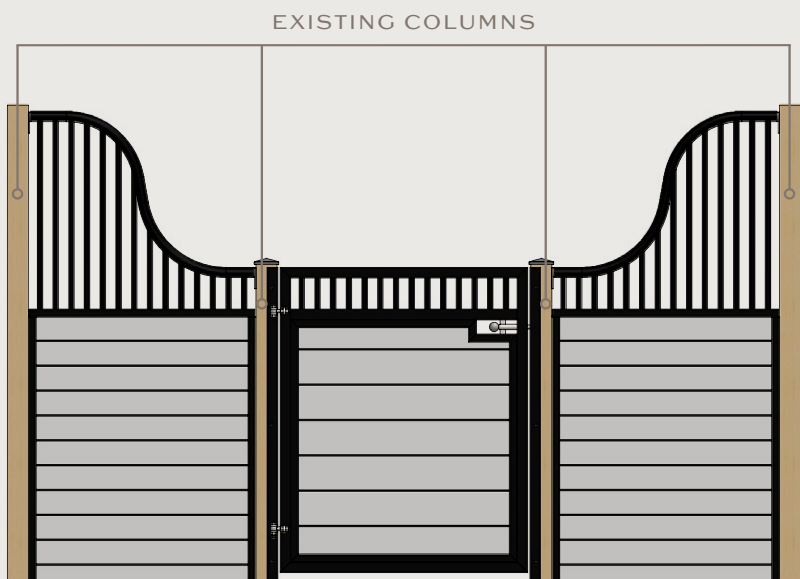
Component kits from Classic are designed and engineered for ease of installation by builders and do-it-yourself barn staff. Detailed instructions ensure your project comes together smoothly. Our sales and design consultants can help you define and design the components you need to fit your barn.

INTEGRITY SLIDING-DOOR STALL COMPONENTS



IS-1 Sliding door kit with feed opening

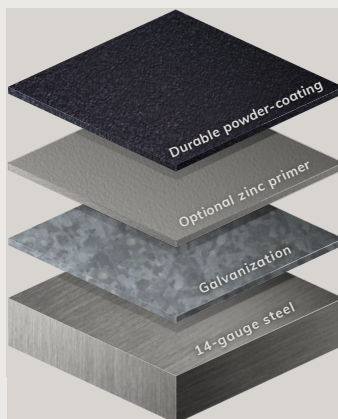
KIMBERWICK HINGED-DOOR STALL COMPONENTS



KS-1 European styled hinged-door kit

DURABLE FINISH

Pre-galvanized steel and state-of-the-art powder coating provides superior rust protection. Every steel component is meticulously finished in our super-durable UV stabilized black polyester powder coating that is non-toxic to both horses and humans.



Enduring safety – Classic components feature maximum rust prevention

FEEDING OPTION

Our standard feed hole can be configured left or right in stall grill components.



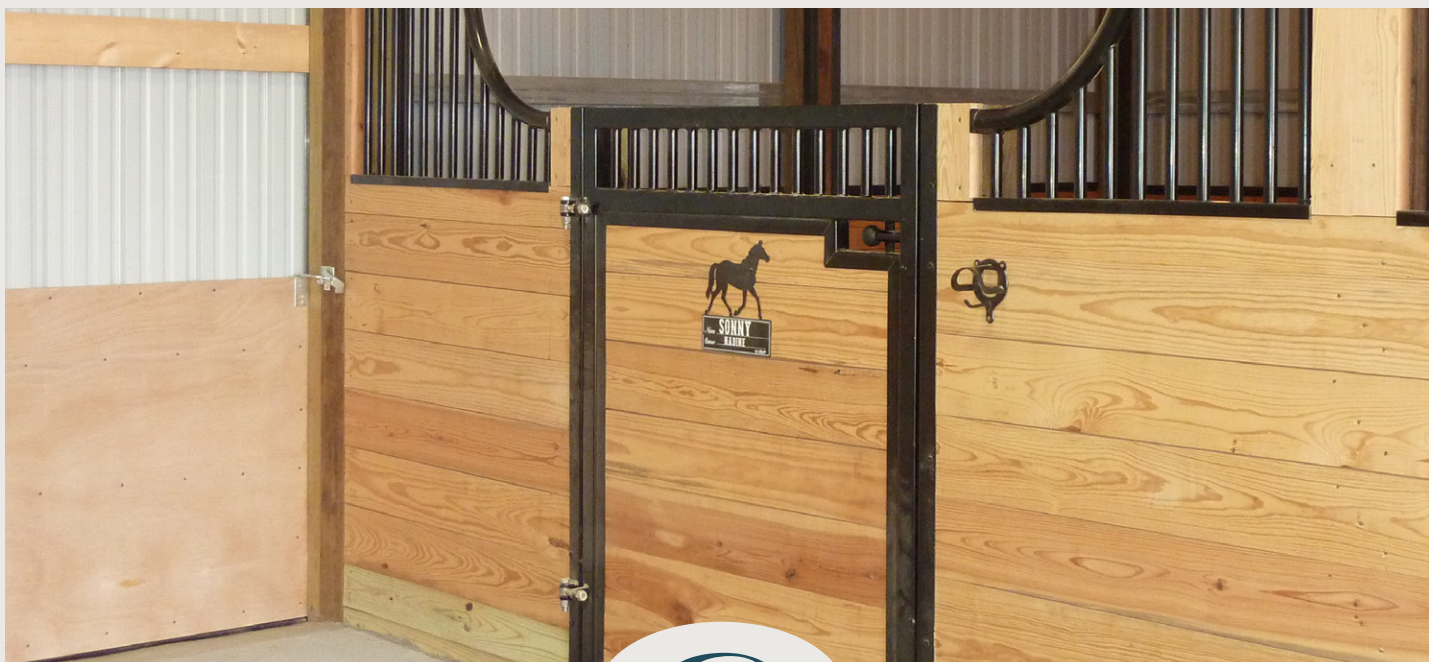
Standard Feed Hole

CUSTOM OPTIONS

Standard design options shown. Contact your design consultant to review custom options available.

NEED MORE DESIGN OPTIONS?
Your design possibilities are virtually limitless.
Visit our website to view more.





KIMBERWICK SERIES COMPONENT KITS

Hinged-door horse stall components for builders

Kimberwick Series components offer many of the same features and benefits as our European Series full-frame hinged-door stall fronts but are supplied to you as a component kit. The durable components are designed to fit within your existing columns and are easily installed by you or your builder.



Low Kimberwick stall front with HVH grill bottom door

FEATURES

- ✓ **Elegant and efficient hinged-door**
Smooth operation with heavy-duty barrel hinges or adjustable stainless-steel hinges
- ✓ **Secure plunger-style gate latch**
The safest in the industry, horses will not get snagged and they cannot open
- ✓ **Optimized for safety**
Narrow spacing between 1" steel bars prevent hooves from getting caught
- ✓ **Exquisitely handcrafted**
30+ years perfecting our engineering and fabrication processes
- ✓ **No rough or sharp edges**
Smooth surfaces at all touchpoints protect your equine family
- ✓ **Superior corrosion resistance**
US-made heavy-duty 14-gauge galvanized steel
- ✓ **5-year structural warranty**
Classic stalls are engineered and fully-welded to stand the test of time
- ✓ **Custom design options**
Personalize your dream barn with stalls that serve your equestrian lifestyle

UNSURPASSED SAFETY FOR HORSES AND PEOPLE



EUROPEAN SERIES

Hinged-door stalls provide unsurpassed safety with distinct European styling and details. The open designs are optimized for both visibility and ventilation. Ideal for barns with wider aisles, hinged doors open wide for maximum accessibility.



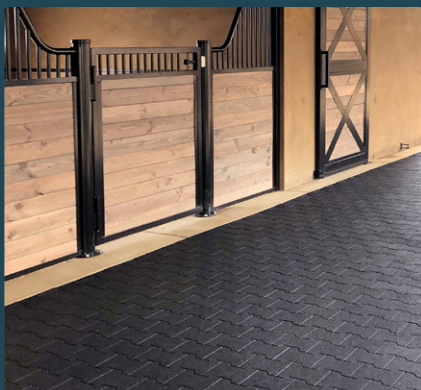
LEGEND SERIES

Sliding-door stalls do not swing outward into the aisle and are ideal for busy facilities where multiple horses are frequently coming and going. The space-saving design also makes them a great choice if you have a narrow aisle in your barn.



COMPONENT KITS

Classic offers all the safety, quality, and craftsmanship found in our full-frame stall-front series in do-it-yourself stall component solutions. Choose from sliding-door Integrity stall components or hinged-door stall components.



HORSE STALL FLOORING

Durable solutions for stalls, aisles, walkways, grooming stall flooring, or anywhere you need a safe surface for you and your horse. In addition to safety, rubber pavers add a decorative flair to your dream barn.



BARN DOORS AND WINDOWS

Our steel-framed doors and windows are built to the same high standards as our award-winning stalls and doors. The hinges and sliding-door track hardware we use ensure safe and consistent operation.



HORSE BARN ACCESSORIES

Complete your dream barn with stabling accessories, including wash bay components, barn fans, lighting, waterer and feeding options, tack room organizers and storage solutions, and pasture gates.