

# HORSE BARN ACCESSORIES



**CLASSIC**  
EQUINE EQUIPMENT

PROTECT WHAT MATTERS MOST



## TACK STORAGE

### Tack stored securely

Our Rotating Tack Wall allows you to keep your tack out of the way for a clean look, and by simply rotating the wall, you can have everything right where you need it. Our Tack Lockers can be installed in your tack room or unoccupied portions of your horse barn, creating convenient locker space for individual horses or boarders. Corner Tack Lockers are adaptable and can even be mounted into the back of an existing stall.

### ACCESSORIES

#### BLANKET BARS

Our blanket bars come in two different sizes. Standard Blanket Bars are 52" in length. Our Stout Blanket Bars hold heavier loads, measuring 38" in length.



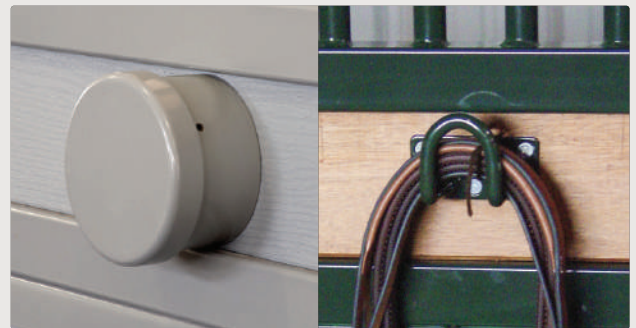
Blanket Bars

#### SWINGIN BLANKET RACK

The Swinging Blanket Rack is available with a galvanized or powder-coated finish. The rack holds up to five blankets at a time.



Swinging Blanket Rack



Euro Bridle Holder

Standard Bridle Hook

#### EURO BRIDLE HOLDER

Hang our Euro Bridle Hook anywhere in your barn. Constructed from steel and covered with a solid brass, brushed aluminum, or powder-coated aluminum cap.

#### STANDARD BRIDLE HOOK

Standard Bridle Hooks can be hung anywhere from your stall fronts to tack rooms. Easy to install. Also available with 8" legs for use as a hose holder.

#### SADDLE AND BRIDLE HOLDERS

Our elegant saddle and bridle holders mount on the wall and keep your tack off the floor. Both are available in brass or cast iron.

# THE ULTIMATE TACK SYSTEM

## Modular solutions for tack storage

Our individual components easily transfer from the Ultimate Frame to the Ultimate Cart. The Ultimate Baskets hang over any 2" rail. Made of heavy duty 3/8" steel, the system can handle all types of tack from the lightest English saddles to the heaviest Western rigs. This system allows you to order any combination of components, so you can organize your tack, your way. Available in our standard galvanized finish or can be powder coated in any of Classic's color options.

### ULTIMATE SADDLE PAD RACK

Horse-head design keeps pads off the ground and aids in airing the pads out. The rack holds up to five pads.

### ULTIMATE SADDLE RACK

Designed to hold English or Western saddles and made of 3/8" galvanized steel.

### ULTIMATE FRAME

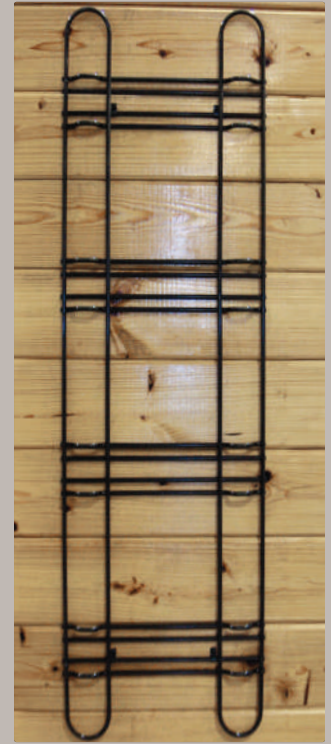
Use with any Ultimate Tack System component to provide storage solutions anywhere in your tack room or trailer.



Ultimate Saddle Pad Rack



Ultimate Saddle Rack



Ultimate Frame

## BASKETS AND SHELVING



Ultimate Tack System Shelf

### ULTIMATE SHELF

Large enough to safely store hat boxes and saddle pads off the floor and designed for the top tier of the Ultimate Frame.

### ULTIMATE SMALL BASKET

Perfect for medications, feed supplements, leg wraps, spray bottles, and other smaller accessories. The Ultimate Small Basket hangs over any 2" rail.



Ultimate Large Basket

### ULTIMATE LARGE BASKET

Perfect for holding all those extra accessories for grooming. The basket can be easily removed from the rack for carry-and-go convenience. The Ultimate Large Basket hangs over any 2" rail.



## BARN FANS

### Horse barn fans for indoor use

Our 20" deluxe basket fans combine high-output performance and energy efficiency at a low cost. These fans are designed to produce high-speed, high-volume air movement while maintaining quiet operation. Basket fans can help keep insects such as flies and mosquitoes suppressed during the hot months. Basket fans include a heavy-duty hot-dip galvanized ceiling-mount bracket, or an option to purchase a wall-mount bracket. They are shipped completely assembled and are easy to install inside of your horse barn. Two-year warranty.

### Ceiling fans for agricultural use

Our indoor/outdoor 60" ceiling fans provide a healthier, cooler environment for horses throughout the year. Designed for air circulation in the higher levels of the barn our fans remain operational in the harshest conditions, improving overall efficiency in temperature control. They are UL/CUL certified to handle moisture and prevent corrosion. Their sealed motors and housing keep dust from collecting in critical components to prevent electrical fires and malfunctions, maintaining safety throughout your facility. Lifetime warranty.

## FEATURES

---

- ✓ **Corrosion resistant**  
Powder coated to prevent rust and corrosion in high humidity areas
- ✓ **Variable speed motor**  
Control the speed of your fan with an optional remote
- ✓ **Performance warranty**  
Totally enclosed, maintenance-free, direct-drive motor is sealed to keep particulates out
- ✓ **UL/CUL certified**  
Passes electrical-code testing and meets requirements for safe agricultural usage



# BARN LIGHTING

## Ceiling mount and gooseneck lighting

High-quality lighting fixtures for indoor or outdoor use. Shades come standard with a white interior, providing a minimum 85% reflectance for maximum efficiency. The turned-in bottom bead is unique and adds extra strength while preventing the collection of dust and water. The standard incandescent lamp holders are heavy-duty porcelain with a spring-loaded center contact and lamp grip-screw shell.

## Customize your barn lighting

Choose from a range of shade styles, ceiling-mount options, or gooseneck wall-mount options to match the design of your barn.



## SELECT A MOUNT



Standard Gooseneck Wall Mount



Fancy Gooseneck Wall Mount



Stem Ceiling Mount



Cord Ceiling Mount

## SELECT A SHADE



Standard Shade



Shallow Shade

## SELECT A GLOBE



No Globe  
(bulb not included)

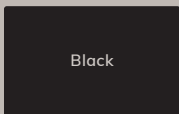


Glass Jelly Jar / Aluminum Guard

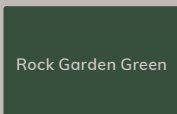


Lexan Jelly Jar

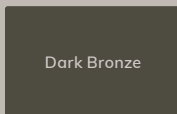
## SELECT A COLOR



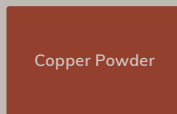
Black



Rock Garden Green



Dark Bronze



Copper Powder



Gunmetal



## FEEDERS

### CORNER MANGER KIT

Designed for safety and health, this manger has no sharp edges or corners. It works well in any stall and mounts at a 45-degree-angle, allowing horses to eat in their natural position for better digestion and overall health. The design features two rails with a channel, allowing you to customize the hay feeder by inserting wood cut to the desired height for your horse.



Corner Manger Kit

### NELSON 540SE HORSE FEEDER

Available in wall or corner-mount styles, this versatile feeder can be mounted on walls, swing-out feeder doors, stalls, and outside pasture fences, giving you options you need for your horses. The stainless steel design makes for easy installation. The large removable feed bowl offers easy cleaning and allows horses of all sizes the ability to eat comfortably.



Nelson 440 Feeder

### CORNER HORSE GRAIN FEEDER

This rugged and durable feeder is constructed with all smooth edges for your horses' safety. Grain feeder can be installed permanently with bolts or with a screw hook (not included), for temporary installation. Dimensions: 9"x16".



### NELSON 440 ALUMINUM FEEDER

The heavy-duty cast aluminum construction lasts for years. These feeders can mount on stall walls, most swing-out feeder doors, and outside on pasture fences. The large 11-quart feed bowl allows horses of all sizes to eat comfortably.

# WATERERS

## NELSON 700 HORSE WATERER

Nelson waterers are designed with a patented, balance beam actuated water valve, providing horses with a constant supply of fresh drinking water. Available in wall-mount, corner-mount, or free-standing configurations. The removable stainless-steel bowl is durable, easy to use, and rust- and chip-resistant.

## ENDUREQUEST HORSE WATERER

This waterer maintains water levels with a completely enclosed diaphragm valve and can be mounted so water connection is out of view and reach of the horse. A dovetail fitting is included to mount on your stable wall or other wall-mount application, and brackets for pipe corral mounting are provided. This design resists rust and corrosion, and the waterer is easy to remove and replace. The bowl is easy to clean and remains isolated from the water supply.

## EQUIFOUNT HORSE WATERER

The Miraco EQUIfount water system provides smooth rounded edges that offer safe access to water. This unit is easy to install, offering ample drinking space, plentiful water, and minimum stall-space intrusion, and features durable polyethylene construction with urethane foam insulation. Convenient valve access and single-screw water level adjustment make set-up fast and easy. Four bolt installation with stainless steel bolts (included) can be plumbed from above or below with easy draining—no disassembly required. 5-year unconditional warranty. Dimensions: 16x16x14" tall.



Nelson 700



Endurequest



EQUIfount

# WASH BAY OPTIONS

## COMFORT & SAFETY FOR HORSE CARE

### Wash bay accessories

Our over-the-top washer keeps the hose above the animal's head and off the floor. Designed for safety in mind, the power-coated tubular steel frame is easy to install. They can be mounted inside or outside, wherever a water supply is present.

Our stainless-steel rotating wash wand installs overhead in a wash stall. It can rotate a full 360 degrees, allowing you to maneuver the hose around the horse. Made from stainless steel parts and fittings, the rotating wash wand comes fully assembled and is easy to install near a water supply.



### Wash bays with traction

Wash-bay systems by Classic provide button-style mats designed for safety in your wash stall. At ½" thick, they can withstand years of use without wearing down or losing traction. Classic button mats interlock to prevent shifting or movement and are nonabsorbent, resisting bacterial growth. Comes with a 12-year warranty against wear, and a lifetime warranty against rolling, buckling, or curling.



Solaira  
Alpha Silver H1

### Heat lamps for your horse

Solaira Alpha Series heaters produce short-wave infrared that converts 92% of consumed energy to instant, controllable, and directable heat. It is not affected by wind or draft, as it warms people, objects, and things, not the air around them. Engineered to meet P24 standards for water spray, so they can handle more moist conditions, indoors and out.

# UNSURPASSED SAFETY FOR HORSES AND PEOPLE



## EUROPEAN SERIES

Hinged-door stalls provide unsurpassed safety with distinct European styling and details. The open designs are optimized for both visibility and ventilation. Ideal for barns with wider aisles, hinged doors open wide for maximum accessibility.



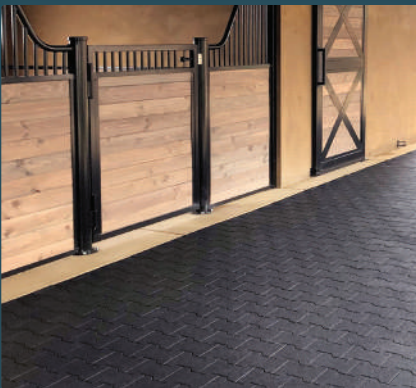
## LEGEND SERIES

Sliding-door stalls do not swing outward into the aisle and are ideal for busy facilities where multiple horses are frequently coming and going. The space-saving design also makes them a great choice if you have a narrow aisle in your barn.



## COMPONENT KITS

Classic offers all the safety, quality, and craftsmanship found in our full-frame stall-front series in do-it-yourself stall component solutions. Choose from sliding-door Integrity stall components or hinged-door stall components.



## HORSE STALL FLOORING

Durable solutions for stalls, aisles, walkways, grooming stall flooring, or anywhere you need a safe surface for you and your horse. In addition to safety, rubber pavers add a decorative flair to your dream barn.



## BARN DOORS AND WINDOWS

Our steel-framed doors and windows are built to the same high standards as our award-winning stalls and doors. The hinges and sliding-door track hardware we use ensure safe and consistent operation.



## HORSE BARN ACCESSORIES

Complete your dream barn with stabling accessories, including wash bay components, barn fans, lighting, waterer and feeding options, tack room organizers and storage solutions, and pasture gates.